



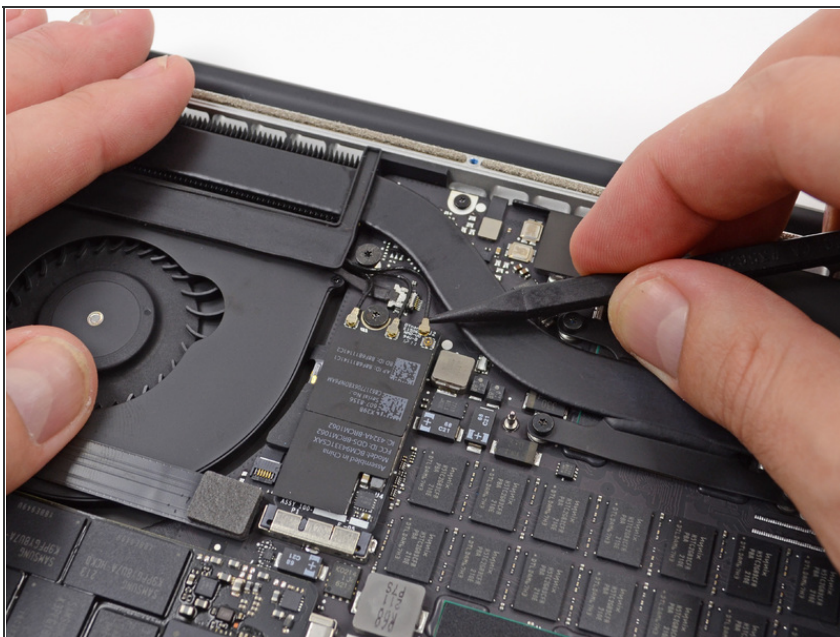
# Installing MacBook Pro 15" Retina Display Mid 2012 AirPort/Camera Cable

Written By: Brett Hartt

## SUMMARY

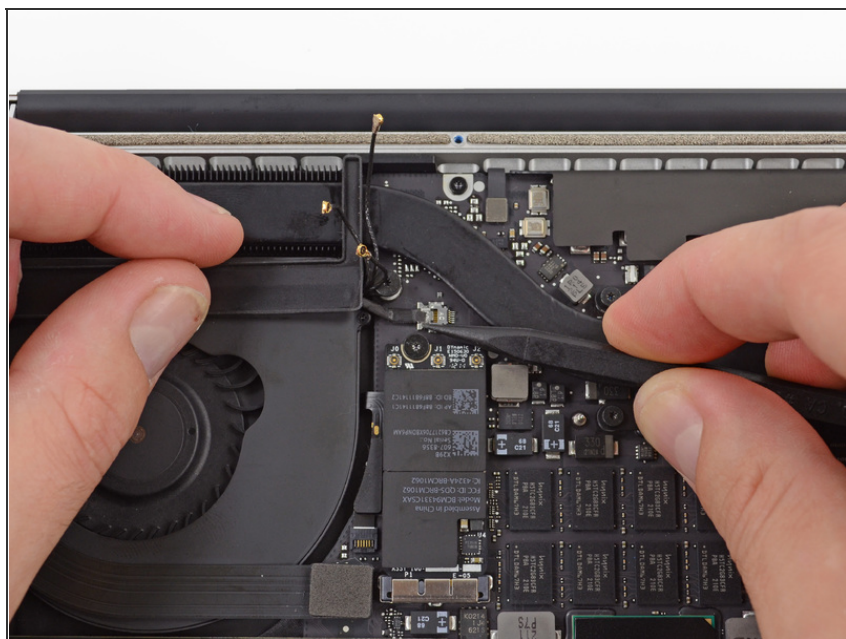
Prereq only.


### Step 1 — AirPort/Camera Cable



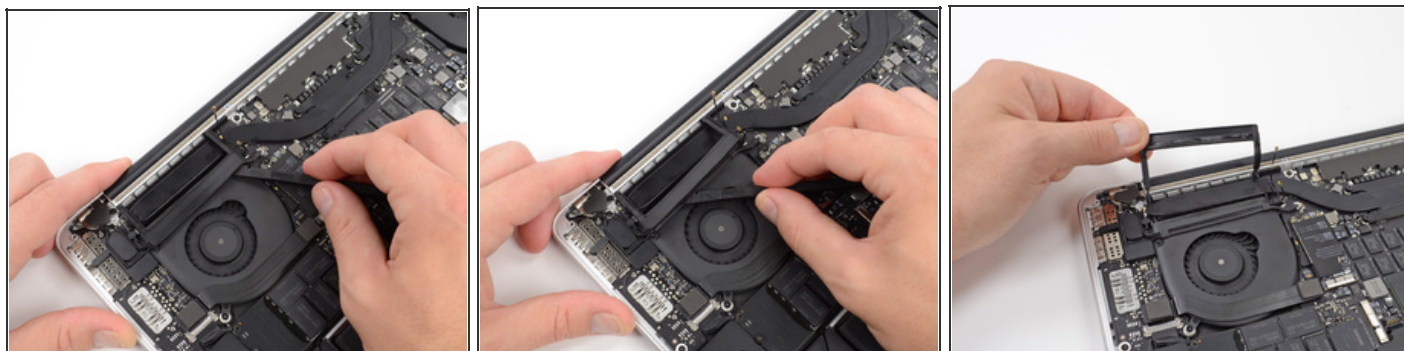
- Use the tip of a spudger to pry the three AirPort antenna cables straight up off of their sockets on the AirPort board.

## Step 2



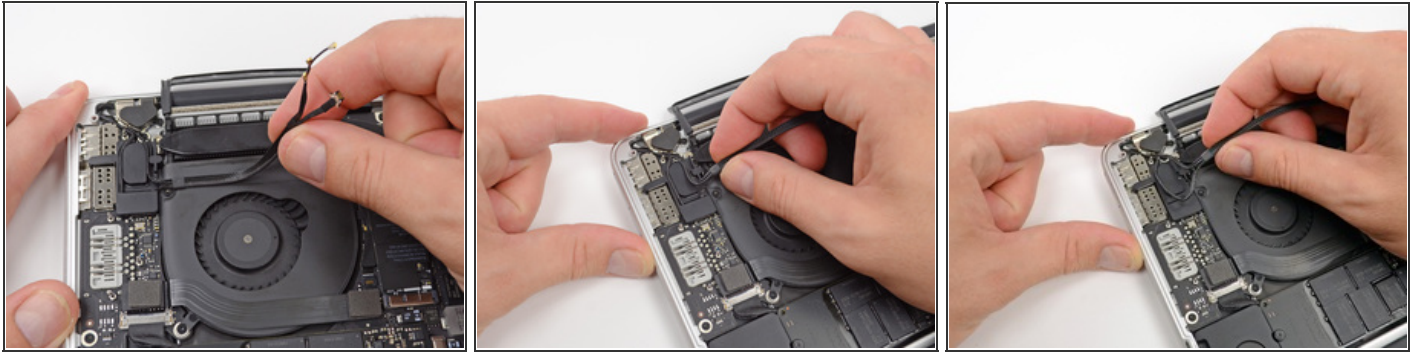
- Use the tip of a spudger to push the camera cable connector out of its socket on the logic board.
- Be sure to push parallel to the board, pushing first on one side, then the other to "walk" the connector out of its socket. 

## Step 3



- Insert the flat end of a spudger underneath the rubber heat sink cover on the right fan.
- Slide the spudger underneath the length of the cover, releasing the adhesive.
- Lift the cover and flip it back so that you can access the cables underneath.

## Step 4



- Use your fingers to pull the AirPort/Camera cables up off the fan.
  - The cables are adhered to the fan, so peel them up carefully to prevent ripping any.
- Carefully de-route the cables from the plastic cable guide.



---

To reassemble your device, follow these instructions in reverse order.

This document was last generated on 2012-10-31 07:54:01 AM.